



Introduction to Farm to School BC and Grant Writing Webinar

October 19, 2021



Recording

This presentation is being recorded and will be uploaded to the Farm to School BC website.





Presenter

Marcus Lobb

Capital Region Community Animator and
Animator Team Lead, Farm to School BC

Marcus Lobb has over 10 years of experience working with school garden programs and establishing farm to school projects in elementary and middle schools. Marcus is currently the Farm to School BC Community Animator for the Capital Region Hub and the Community Animator Team Lead and Grants Coordinator.





Presenter

Addie de Candole

Food Literacy Advisor, Farm to School BC

Addie de Candole is an avid market gardener and has been working with schools for over five years. She has seen how much more successful projects are when they are thoughtfully planned in advance of growing.



Agenda

1. About Farm to School BC and our hubs
2. Food literacy programs
3. Farm to School BC grant + writing tips!
4. Regional breakout rooms
5. Closing



About Farm to School BC

HEALTHY,
LOCAL FOOD

SCHOOL &
COMMUNITY
CONNECTEDNESS

HANDS-ON
LEARNING



About Farm to School BC

14

years Farm to School BC
has been active



271+

farm to school programs
funded across BC



19

school districts supported
by Farm to School BC



Administrator and Funders

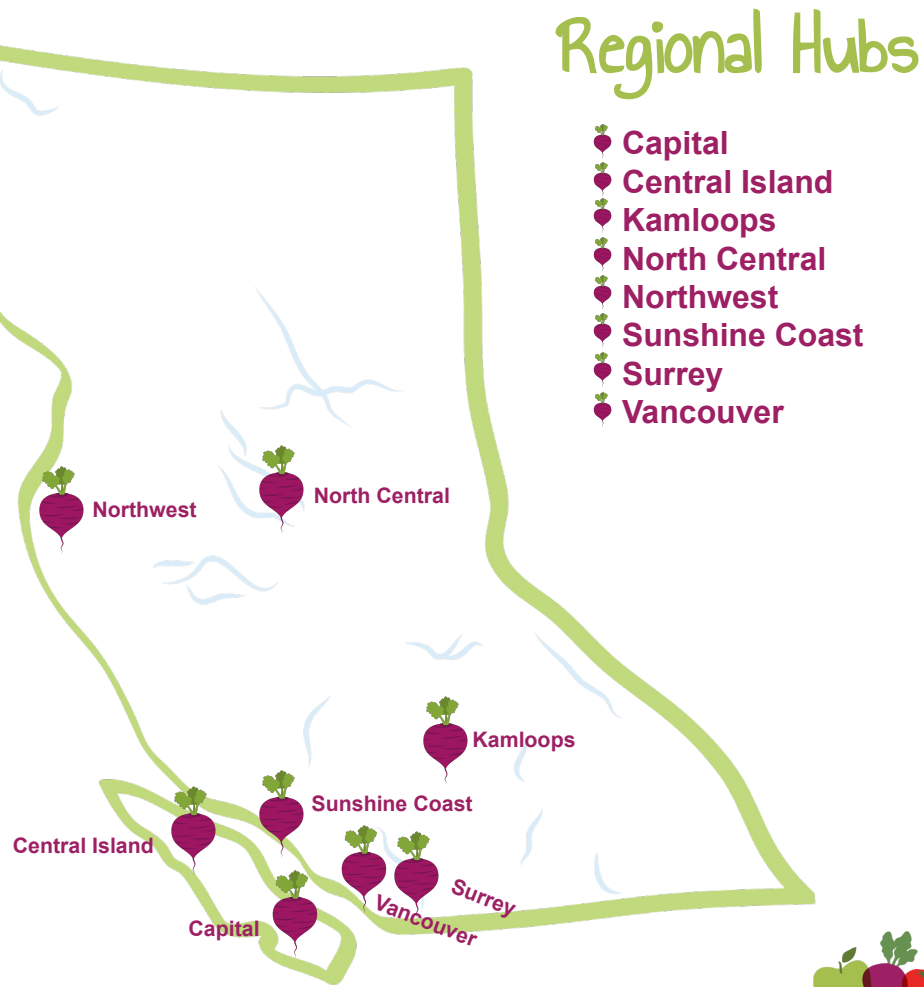


Farm to School BC is a program of the
Public Health Association of BC

and is supported by the Province of British Columbia and the Provincial Health Services Authority



Where we work



Community Animators / Hubs

Community Animators work in each of these eight hubs to support the schools that have received Farm to School BC funding. This support varies across hubs, but may include:

- Connecting to local community organizations
- Supporting teachers with resources and one-on-one time
- Working with school district staff
- Connecting teachers in the school district to each other



Our Team



Richard Han
Provincial Manager



Addie de Candole
Food Literacy Coordinator



Marcus Lobb
Animator Team Lead
& Capital Animator



Erin Champion
Central Island Animator



Meryn Corkery
Vancouver Animator



Roanne Whitticase
North Central Animator



Chelsea Woolhouse
Communications Coordinator



Aaren Topley
Can You Dig It Manager



Claudia Pérez
Surrey Animator



Serena Caner
Kamloops Animator



Margo Peill
Northwest Animator



Naomi Fleschhut
Sunshine Coast Animator

Provincial Team

Regional Community Animators





Food Literacy Programs



Farm to School BC Programs



Microgreens



Tower gardens



Beekeeping



School gardens



Cooking classes



Farm visits



Salad bar



Greenhouses



Indoor grow stations



Smoothies



Garden boxes



Micro farm kits

and more!



Food Literacy Programs

1. In the Garden
2. On the Land
3. In the Classroom
4. In the Kitchen

<https://farmtoschoolbc.ca/starting-a-program/>



Example 1: Arthur Hatton Elementary

1. Microgreens
2. Snack program
3. 3 raised beds
4. 6 raised beds, fencing, irrigation, in the school garden



Example 2: Wickaninnish Community School

1. Planted a Food Forest!
2. Expansion of garden = more harvest
3. Meal Program gets more veggies





Applying for a Grant



In the Chat Box

What are you hoping to learn today?
(30 seconds)



Our Grants

Farm to School BC Start-Up Grants

Amount: Up to \$3,000

Deadline: November 14, 2021, at 11:59 PM

Farm to School BC Scale-Up Grants

Amount: Up to \$1,000

Deadline: November 14, 2021, at 11:59 PM



Start-Up Grant

Eligibility Criteria

- Must be a K-12 school located in British Columbia.
- Applicants located in a Farm to School BC **Regional Hub** are encouraged to connect with their Regional Community Animator to discuss their project before applying.
- Applicants from rural/remote and First Nations schools are encouraged to apply.
- Schools with existing programs that are well resourced and supported are encouraged to apply for a Farm to School BC **Scale-Up Grant** If you are unsure, please contact the Grants Coordinator at grants@farmtoschoolbc.ca.



Start-Up Grant

Exclusion Criteria

- Previous or current Farm to School BC Start-Up grant recipient.
- Previous or current recipient of a Farm to Cafeteria Canada's Salad Bar Grant.
- A potential applicant for the Farm to Cafeteria Canada grant (opens November 2021 – for more information [click here](#)).



Scale-Up Grant

Eligibility Criteria

- Must be a K-12 school located in British Columbia.
- If you have previously received a Farm to School BC Start-up Grant, then you must have completed your final report and submitted financials before applying for a Scale-Up Grant.
- Applicants located in a Farm to School BC **Regional Hub** are encouraged to connect with their Regional Community Animator to discuss their project before applying.
- Applicants from rural/remote and First Nations schools are encouraged to apply.



Scale-Up Grant

Exclusion Criteria

- Previous or current Farm to School BC Scale-Up grant recipient.
- Previous or current recipient of a Farm to Cafeteria Canada's Salad Bar Grant.
- A potential applicant for the Farm to Cafeteria Canada grant (opens November 2021).



Support

Capital Region

School Districts 61, 62, 63, 64



Marcus Lobb
Community Animator Team Lead
capitalregion@farmtoschoolbc.ca

Northwest Region

School Districts 52, 54, 82



Margo Peill
northwestregion@farmtoschoolbc.ca

Vancouver Area Region

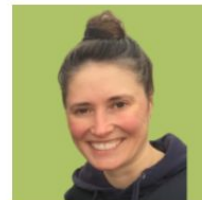
School Districts 38, 39, 44, 45, 48



Meryn Corkery
vancouverregion@farmtoschoolbc.ca

North Central Region

School Districts 28, 57, 91



Roanne Whitticase
northcentralregion@farmtoschoolbc.ca

Kamloops Region

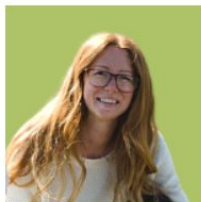
School Districts 73, 83



Serena Caner
kamloopsregion@farmtoschoolbc.ca

Central Island Region

School Districts 68, 69, 70



Erin Champion
centralislandregion@farmtoschoolbc.ca

Surrey Region

School District 36



Claudia Páez
surreyregion@farmtoschoolbc.ca



Documents and Tools

Important

Before proceeding further, please ensure you have the following files:

1. **Start-Up Grant Application Form** (for reference). Questions listed in this application form will be asked during the online application. We recommend that you review or complete these questions before starting the online application.
2. **Program Budget Form for Grant** (required). You will be required to upload a completed version of this budget form for your project during the online application.

To help you with pricing estimates and budgeting for your project, please refer to our **Farm to School BC Budget Calculator**.



Budget Calculator

- Outdoor Garden Equipment List
- Indoor Garden Equipment List
- Salad Bar List
- Cooking Equipment List

Includes: cost spectrum of items, recommendations on purchasing quantities, sources for purchasing, etc.



Budget Calculator

Activity	Items	Description	Price Estimates	Suggested Quantity (based on 25 students)	Actual Quantity	Actual Price	Total Item Price	Links
Composting	Composter (Hand Built + Labour)	Wooden, with 1 - 3 different compartments	\$300 - \$700	1			\$0.00	Sample plan
	Composter (Store Bought)	Simple round black plastic	\$120 - \$200	1-2, depends on food scrap quantity			\$0.00	https://farmtoschoolbc.ca/composting/
School Garden - Planter Boxes	Raised Planter Box Wooden (6ft X 3ft X 2.5 ft)	Recommend the addition of corner 4X4 posts that the width and length slats attach to for more durability.	\$150 - \$250	Ideally for areas with poor or limited soil.			\$0.00	
	Wooden Raised Bed and Soil (6ft x 3ft x 1.5 ft)	Depending on your wood - Fir or Cedar are the most common options. Cedar lasts usually 30% longer. You will also have to factor in soil to fill the box. Soil calculator's help with this process, but this size box will take appx 0.7 of a yard of topsoil.	\$75 - \$100 depending on wood - this does not include delivery costs, which tend to be appx \$100	Ideal for areas in which the soil is good.			\$0.00	https://www.gardeners.com/how-to/soil-calculator/7558.html
	Fabric pots	Pots come in a variety of sizes (1, 3, 5 gallons) - recommend at least	\$2-5 each	Depends on production level, likely at least 10 pots			\$0.00	https://www.topsoileatlocal.com/
	Caja raised beds	Plastic raised beds to provide a quick install; boxes also self-waterin	\$75 each	Depends on production level			\$0.00	http://www.thegrowingconnection.com
Garden Equipment Tools	Deer Fencing	50 ft X 25ft X 6 ft - price depends on materials used - orchard poles with black plastic netting is cheapest, larger poles with metal costs more but lasts longer.	\$200 - \$500				\$0.00	
	Garden Gloves	Both adult and child-size, often larger packs available	\$2-5 each	6-25			\$0.00	
	Garden Hose	50 ft - but it depends on the distance from your faucet. If the distance is great, consider running a line underground and setting up a garden located faucet.	\$35 - \$50	1-2			\$0.00	



Contact Information

⊕ **Lead Applicant** *(Must be a representative from the applying school)*

Name: Click or tap here to enter text.	Position: Click or tap here to enter text.
What is the best way to reach you? Click or tap here to enter text.	
Email: Click or tap here to enter text.	Phone: Click or tap here to enter text.

Co-Lead Applicant *(Typically a parent, community partner, teacher, health authority representative, etc...)*

Name: Click or tap here to enter text.	Position: Click or tap here to enter text.
What is the best way to reach you? Click or tap here to enter text.	
Email: Click or tap here to enter text.	Phone: Click or tap here to enter text.



Application Questions

1. **Describe what you plan to do with your funds if you are awarded this grant. In specific, describe how your Farm to School BC program will integrate the core elements of the program (local/traditional food, hands-on learning, and school community connectedness)?**
 - Be detailed, and don't be afraid to use bullet points
 - State your goals - who will be impacted, and how
 - Keep your project simple with tangible outcomes
 - Ensure your timeline aligns with reporting period (October 2022 / May 2023)



Application Questions

Financial Sustainability

It is important for grant recipients to ensure that their Farm to School BC program is sustainable, both financially and logistically.

1. How do you plan to sustain your program after the initial funding has been used?

Consider reaching out to community partners, including local non-profits, parents, and the school PAC for support. Fundraising and sponsorship drives can also be highly beneficial for the financial sustainability of a program.



School / Project Team

The most successful and sustainable farm to school initiatives are built upon strong relationships between schools and farmers, community members, and support organizations, tapping into local knowledge, passion, skills and resources.

Name	Title	Organization/ Affiliation	Roles/ Responsibilities in project	Email
Click or tap here to enter text.	Click or tap here to enter text.	Click or tap here to enter text.	Click or tap here to enter text.	Click or tap here to enter text.
Click or tap here to enter text.	Click or tap here to enter text.	Click or tap here to enter text.	Click or tap here to enter text.	Click or tap here to enter text.
Click or tap here to enter text.	Click or tap here to enter text.	Click or tap here to enter text.	Click or tap here to enter text.	Click or tap here to enter text.



Team cont.

School Administration Support

For any proposed Farm to School BC programs, school administrators must be informed and have pre-approved your application.

Have you discussed your farm to school project with your school administration?

☐ Yes

☐ No



EHO Requirements?

Environmental Health Officers

Environmental Health Officers are valuable points of contact for assisting schools in ensuring that their farm to school projects meet regulation standards if they involve using food. Your local Environmental Health Officer should be involved in your Farm to School BC project if you are planning to serve and consume food.

If you are unsure who your local Environmental Health Officer is, please contact our Grants Coordinator at grants@farmtoschoolbc.ca.

Have you discussed your proposed Farm to School BC program with your local Environmental Health Officer?

- ☐ No, our project does not require consultation from our local Environmental Health Officer
- ☐ Yes, we are already or will be working with an Environmental Health Officer

Name of Environmental Health Officer: Click or tap here to enter text.

Contact info: Click or tap here to enter text.



Reporting Start-Up Grant

Progress - Due October 2022

Requirements: Short online report, with program pictures

Final Report - Due May 2023

Requirements: Complete online reporting form, submit program pictures, budget, must have spent all funds



Reporting Scale-Up Grant

Final Report - Due October 31st, 2022

Requirements: Complete online reporting document, submit program pictures, fill out budget form, have spent all funds.



Grant writing tips

- Share responsibilities with teammates (budget, contact info, content)
- Keep your answers concise - bullet point is fine - look at the question, am I answering each part?
- In general: use similar language as mentioned in the application
- Have someone else proofread it before submitting
- Don't leave it to the last day!





Regional Breakout Rooms

Meet your local Community Animator!



Hubs' School Districts:

Capital: 61, 62, 63, 64

Central Island: 68, 69, 70

Kamloops: 73, 83

Sunshine Coast: 46 – pilot

Surrey: 36

North Central: 28, 57, 91

Northwest: 54, 82, 52

Vancouver: 38, 39, 44, 45, 48

Regional Hubs

- Capital
- Central Island
- Kamloops
- North Central
- Northwest
- Sunshine Coast
- Surrey
- Vancouver





Closing



Closing

- Grant applications are due: November 14th, 2021
- Webinar slides and recording will be on the website

Questions? Email Marcus Lobb or your local Community Animator.



Contact



Marcus Lobb

Grants Coordinator

grants@farmtoschoolbc.ca

www.farmtoschoolbc.ca



@farmtoschoolbc



@farmtoschoolbc



@farmtoschoolbc





Farm to School BC

www.farmtoschoolbc.ca



@farmtoschoolbc



@farmtoschoolbc



@farmtoschoolbc



Sign-up for our newsletter & local online discussion groups at farmtoschoolbc.ca/newsletter

