



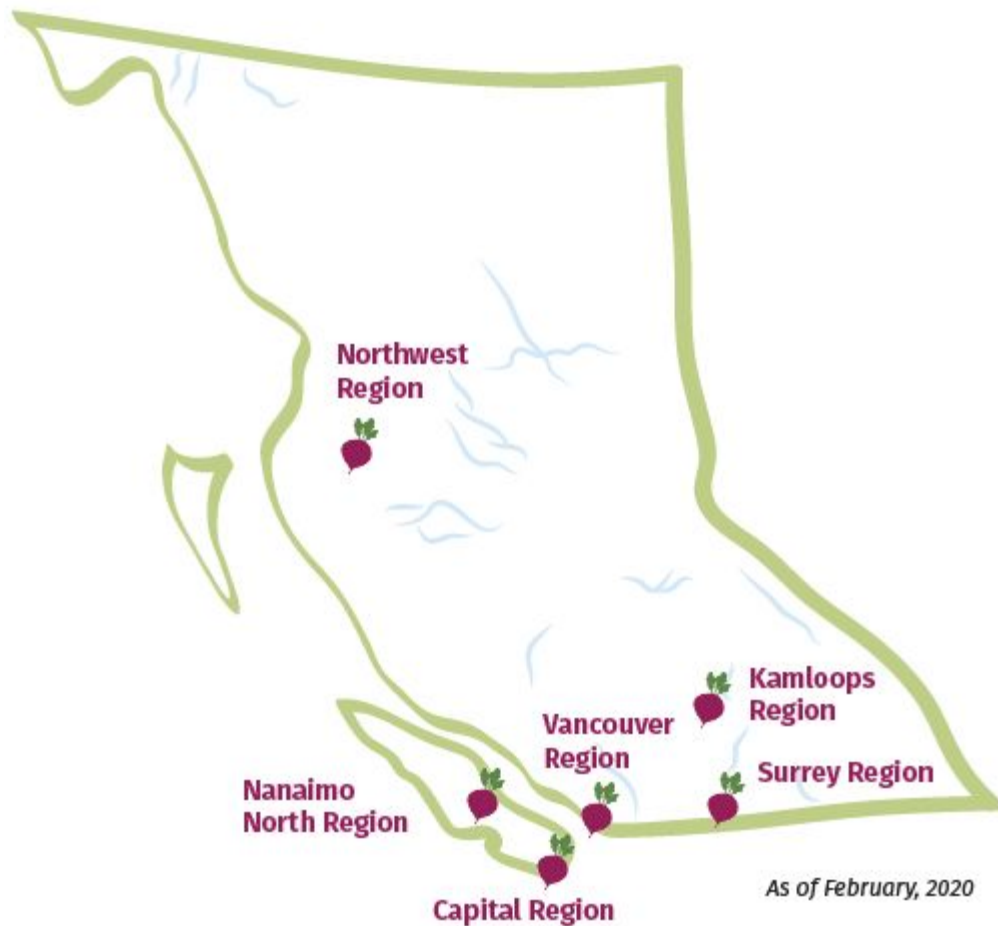
FARM TO SCHOOL BC WEBINAR SERIES

Learn about the Local Food 2 School
program on Haida Gwaii and their
activities during COVID!



Farm to School BC is a program administered by the Public Health Association of BC, and is supported by the Province of British Columbia and the Provincial Health Services Authority.

Farm to School BC



As of February, 2020

Menti Survey

Go to www.menti.com and use the code 15 19 14.



Speaker Bios/Introduction

Shelly Crack

Shelly is of European descent and was raised on the Anishinaabe territory outside Thunder Bay, Ontario. She has been a registered dietitian with Northern Health on Haida Gwaii for 15 years with a focus on local food systems. Her mentors around Haida traditional food are Jenny Cross and Margaret Edgars. She has been involved in LF2S for over 10 years and has 2 school aged children Freya (10) and Huxley (7).

Sheri Disney

Sheri's family is from Haida Gwaii, and she has lived in Masset throughout her life. Her formal education is in Human Resource Management. On Haida Gwaii she has previously worked with Credit Unions and Northern Health.

She now, happily, calls Haida Gwaii home full time with her two sons. Sheri has just been through orientation for the Learning Circle Coordinator position, and is excited to be part of the team!

Local Foods 2 School Haida Gwaii: A Timeline



2010 - Multiple Salad Bar Grants

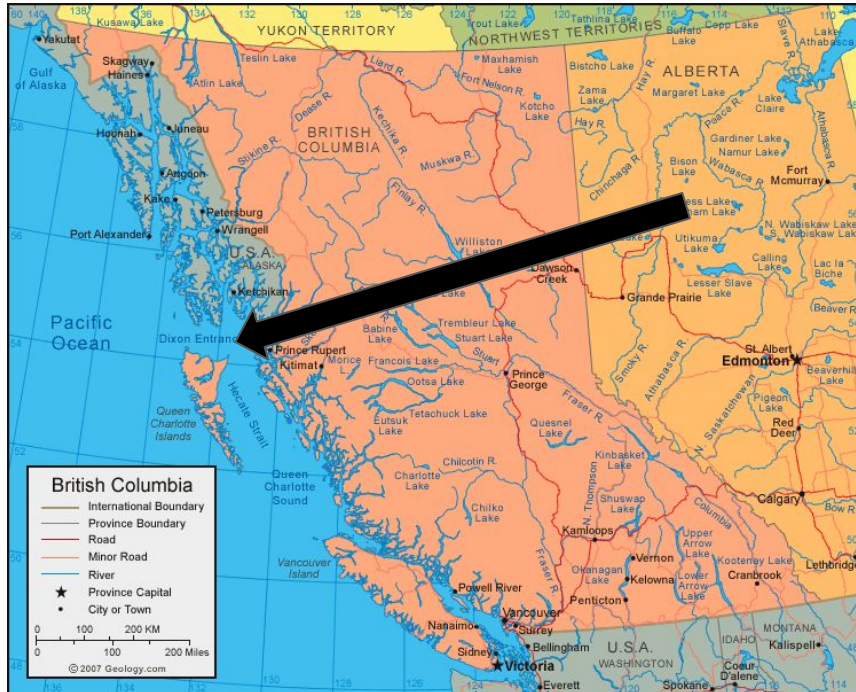
2014 - Learning Circle Coordinator created

2015 - Pantry concept created

2017 - Traditional Food focus and XFC created

2020 - Food Sovereignty island wide

About Haida Gwaii: How location affects our work



- Modes of travel, conditions and time
- Affect on our services and delivery
- Emergency Response
- Population
- Climate
- Feeling of Abundance and Security

Partnerships and Funders

-Farm to School BC (Provincial)

•**Farm to Cafeteria Canada (National)**

•Partners 2 Healthier Communities (P4HC)/Plan H grants

•Imagine/FNHA

•**Canadian Health Institute Research (CIHR)**

•**Victoria Foundation**

•Canadian Evolution Foundation

•Agriculture and Agri-Food Canada (AAFC)

•Public Health Association of BC (PHABC)

•Mazon Canada/Breakfast Club of Canada

•Haida Child and Family

•Get Youth Working



•Council of the Haida Nation

•Old Massett Village Council

•Skidgate Band Council

•Municipalities

•School District 50

•Food gatherers: fish, deer, berries

•Elders and knowledge keepers







How we are operating during COVID-19?

- Food delivery
- Food box pick ups
- Garden Expansion
- At home grow kits
- Social Media
- Collaboration with CHN



What were your takeaways from this webinar?



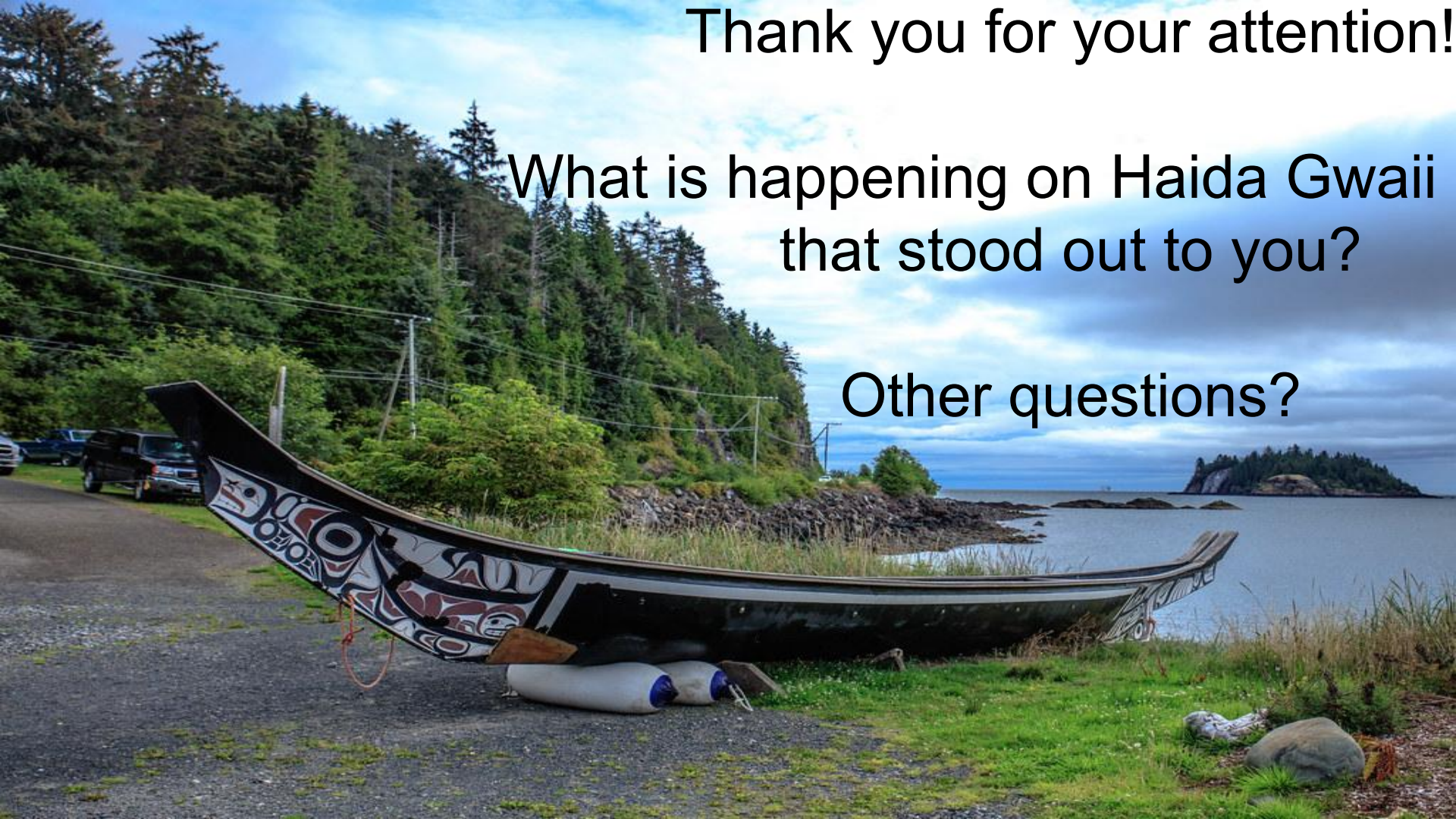
A word cloud of takeaways from a webinar, with words in various colors and orientations. The words are: hands on learning, continuity, sustainable practices, support, harvesting and processing, local and traditional food, food security elevation, all island, kids harvesting seaweed, caring for elders, food security, collaboration, food programs, flourish, and respect.

hands on learning
continuity
sustainable practices
support
harvesting and processing
local and traditional food
food security elevation
all island
kids harvesting seaweed
caring for elders
food security
collaboration
food programs
flourish
respect

Thank you for your attention!

What is happening on Haida Gwaii
that stood out to you?

Other questions?



Stay in touch!

Facebook: <https://www.facebook.com/localfoodtoschoolhaidagwaii/>



Local Food to
School - Haida
Gwaii

@localfoodtoschoolhaidag



Webinar Series: June 10

farmtoschoolbc.ca/webinar-series/

How can budding environmental leaders and youth in general prepare to prevent the global food apocalypse?

Wednesday, June 10, 3:30 - 4:30pm



FARM TO SCHOOL BC WEBINAR SERIES

Learn about what YOU can do to
prevent a global food apocalypse from
Dr. Tammara Soma!



Farm to School BC is a program administered by the Public Health Association of BC, and is supported by the Province of British Columbia and the Provincial Health Services Authority.

Stay connected!

Website: www.farmtoschoolbc.ca

Sign up for your local regional **listservs** on our website.

Monthly **newsletter**:
<https://farmtoschoolbc.ca/newsletter-signup/>

Social Media

Facebook: Farm to School BC

Instagram/Twitter: @farmtoschoolbc

Regional Hub Community Animators

Provincial Manager



Richard Han

prov.manager@farmtoschoolbc.ca

Northwest Region Hub

Community Animator



Margo Peill

northwestregion@farmtoschoolbc.ca

Vancouver Region Hub

Community Animator



Sam Gambling

vancouverregion@farmtoschoolbc.ca

Kamloops Region Hub

Community Animator



Addie de Candole

kamloopsregion@farmtoschoolbc.ca

Nanaimo-North Region Hub

Capital Region Hub

Community Animator



Marcus Lobb

nanaimonorthregion@farmtoschoolbc.ca

capitalregion@farmtoschoolbc.ca

Surrey Region Hub

Community Animator



Claudia Paez

surreyregion@farmtoschoolbc.ca